

# DPL4000

Portable low range dew point system for accurate and reliable verification of gases using current sensor technology.



## LOW RANGE DEW POINT MEASUREMENT

- Determine very low dew points with high accuracy
- Excellent long term stability
- Rapid response time with fast stabilizing dew point reading
- Withstands condensation
- Includes hand held instrument, sensor, sensor housing, flow meter, quick connect fittings, logging software, and protective carrying case

## TECHNICAL FEATURES

### Optimal dew point range

- 112 to -22 °F with +/- 3.6 °F accuracy
- 80 to -30 °C with +/- 2 °C accuracy

### Operating temperature

- 40 to +140 °F
- 40 to + 60 °C

### Pressure range: 0 to 725 psi

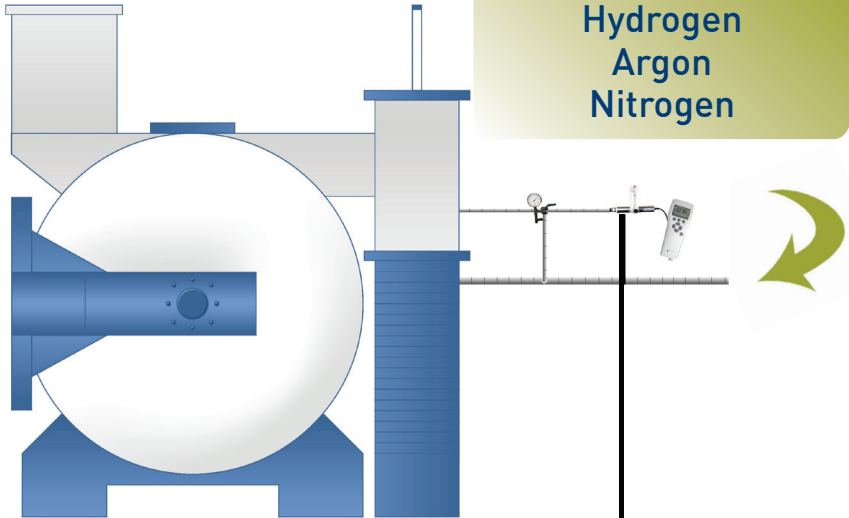
### Alarm indication

### Sensor threads: 1/2" NPT

### Sensor housing: IP65 – NEMA4 (AISI316L)

Typical DP Gas Measurements

**Hydrogen**  
**Argon**  
**Nitrogen**



## OTHER FEATURES

### Durable handheld

- Easy to read LCD display

Units\*:

- Dew Point Temperature (°F or °C)
- PPB (Parts Per Billion Water – by volume)
- PPM (Parts Per Million Water – by volume)
- PPMW (Parts Per Million Water – by weight)

\*Between 1 and 3 quantities can be displayed at one time.

- Process variable trending and data logging
- Battery powered  
Rechargeable battery included  
Battery run time: 12 hours

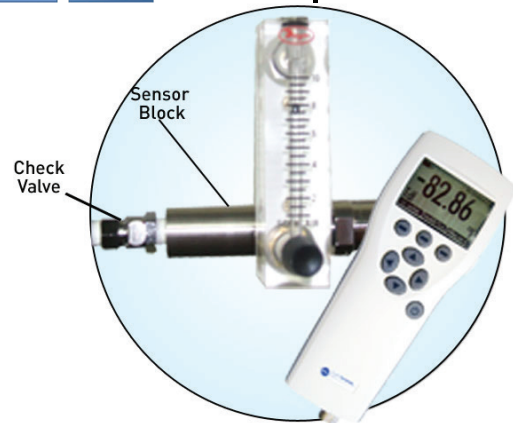
### Sensor Quick Disconnect

- Includes two male quick disconnect fittings

### USB Cable and Utility Software

- Quickly retrieve data from handheld device

INNOVATIVE SOLUTIONS WORLDWIDE



**Super Systems**  
incorporated

# Special Features



## Quick Response

## Easy to Use

### Sensor Purge

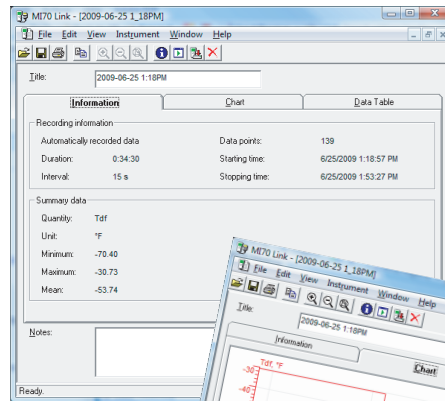
This function evaporates all excess moisture molecules from the sensor to significantly increase the response time when the sensor goes from an ambient condition to a dry condition. A Sensor Purge will be initiated automatically when the sensor detects a large wet-to-dry environmental change or upon startup and after every 24 hours of continuous use.

## Specifications

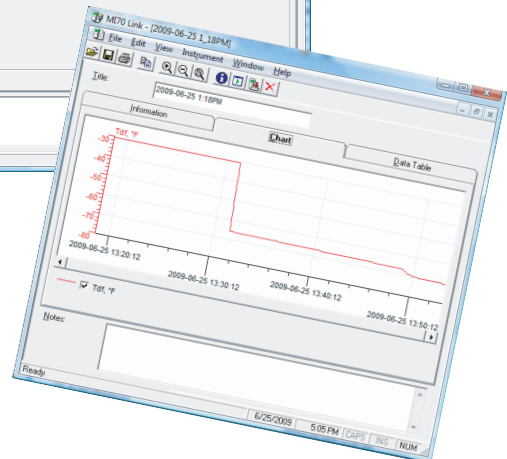
This device is used to measure very low dew points with high accuracy and excellent long term stability. It can be used across a wide range of temperatures and pressures. It measures dew point in a variety of non-corrosive gases including Nitrogen, Argon, and Hydrogen.



- Total Measurement Range:** -148°F to +68°F (-100°C to +20°C)
- Optimal Measurement Range:** -112°F to -22°F (-80°C to -30°C)
- Accuracy (Within Optimal Range):** +/- 3.6°F (+/- 2°C)
- Accuracy (Outside Optimal Range):** +/- 5.4°F (+/- 3°C)
- Operating Temperature Range:** -40°F to +140°F (-40°C to +60°C)
- Operating Pressure Range:** 0-725 psi / 0-50 bar
- Sensor Housing:** IP65 - NEMA4 (AISI316L)
- Power:** Rechargeable Battery (included) or 4 "AA" Batteries
- Battery Recharging Time:** Approximately 4 hours
- Run Time on Battery Power:** Approximately 12 hours (depends on application)
- Output Units:** Dew Point Temperature (°F or °C), PPB (Parts Per Billion Water - by volume), PPM (Parts Per Million Water - by volume), PPMW (Parts Per Million Water - by weight) *NOTE: 1-3 quantities can be displayed at one time.*



## Utility Software



**Super Systems**  
incorporated

7205 Edington Drive  
Cincinnati, OH 45249  
513.772.0060 **phone**  
513.772.9466 **fax**